



**Mr.Mihir Vadalia**  
**+91 9879545892,9824801081**  
**email :- mihir@tridevcementarticles.com**  
**email :- mihirvadalia@gmail.com**  
**www.tridevcementarticles.com**  
**(AN ISO 9001:2008 COMPANY)**

*Innovations Towards Boundary Wall*

## ABOUT US

We introduce ourselves as :-

**Tridev Cement Articles** (TCA) is the first to introduce the Precast & Pre-stress Technology in Gujarat with maximum capacity, latest machinery and infrastructure which aids in achieving our full capacity without compromising with the quality. We are one of the largest manufacturer and erection service providers of Precast & Pre-stressed Boundary Wall with different designs as well as Office Building, Security Cabin, Labour Quarter, Garden Curbing, Footpath Curbing etc.

General Introduction:-

Company	This company started its facility in Vasad in 2004 , 2011 at Sholapur , 2014 at Kurnool A.P, and 2017 at dhule, Maharashtra.
Products	Pre cast cement articles, boundary wall , security cabins , labor quarters etc.
About Company	This company is the first company in Gujarat to introduce pre cast and pre stressed technology in Gujarat with maximum capacity , latest machinery and infrastructure which aids in achieving full capacity without compromising in quality.
Production Capacity	400 running meters/day
People (other than labour)	16 no's ( 3 No's in QA , 1 No in production , 12 No's technical person) - Qualified Staff
Customers (major)	Sterling Wilson , Renew Power, Bosch , Mahindra , Suzlon etc.
Turn Over	15 Crore INR

*Innovations Towards Boundary Wall*

## Technical Details & Description

Machinery	Automatic batching plant, cube testing facility, movable batching plant for site and auger mounted tractor, Ajax flori.
Maximum project size	<ol style="list-style-type: none"> <li>1. 14.5 KM(Supply &amp; Erection) at Mehboobnagar,Dist.,TS.</li> <li>2. 13KM at mulkanoor,TS. for Renew power,</li> <li>3. 12.5 KM( M&amp;M).Other projects at Gwalior , Vijaypur for Renew power etc</li> </ol>
Inventory	20-30K panels ~ 8-10 km through out the year for M30 grade is available in inventory.
Molds for post	<ol style="list-style-type: none"> <li>1. mold available. Size of the mold upto 12 feet (L) X 0.5 feet (W) X 0.5 feet (D)</li> </ol>
Molds for panels	molds available- 6 feet (L) x 1 feet(W) x 0.166 feet(D) and 7 feet(L) x 1feet(W) x 0.166 feet(D).
Manufacturing capacity	<ol style="list-style-type: none"> <li>1) 400 running meters per day @ Vasad.</li> <li>2) 250 running meters per day @ Solapur.</li> <li>3) 200 running meter per <a href="#">day @ A.P</a> .</li> <li>4) 200 running meter per day @ Dhule,Maharashtra .</li> </ol>
QMS Certification	System certification is through Quality Control Certification for ISO 9001:2008 certified in Sep'13. No consultant was hired.
Lead time	Within 20 days 8 KM length of panel can be dispatched to customers site

## Manufacturing Process



Raw material (Sand ,20mm,12mm,Cement opc 53,PC steel).



A semi automatic batching plant is used for mixing



Once concrete mix is ready it is shifted to the molds section by the movable trollies.



The steel bar having an elongation of 588 N is inserted into the concrete mix with a force applied to the bar equivalent to an elongation of 300mm.



High frequency vibrator is placed on the mold to prevent air bubble/voids, and finishing is done.



(DE MOULDING) Finally the panel and the post are removed from the mold after 24/48 hours and a curing of minimum 14 days is done by sprinkling water full times .

*Innovations Towards Boundary Wall*

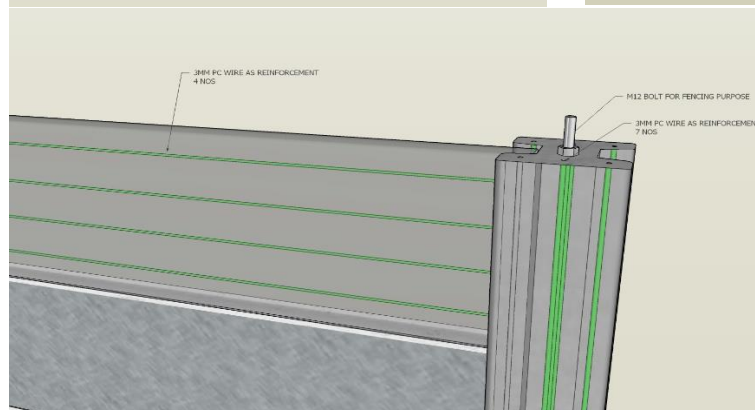
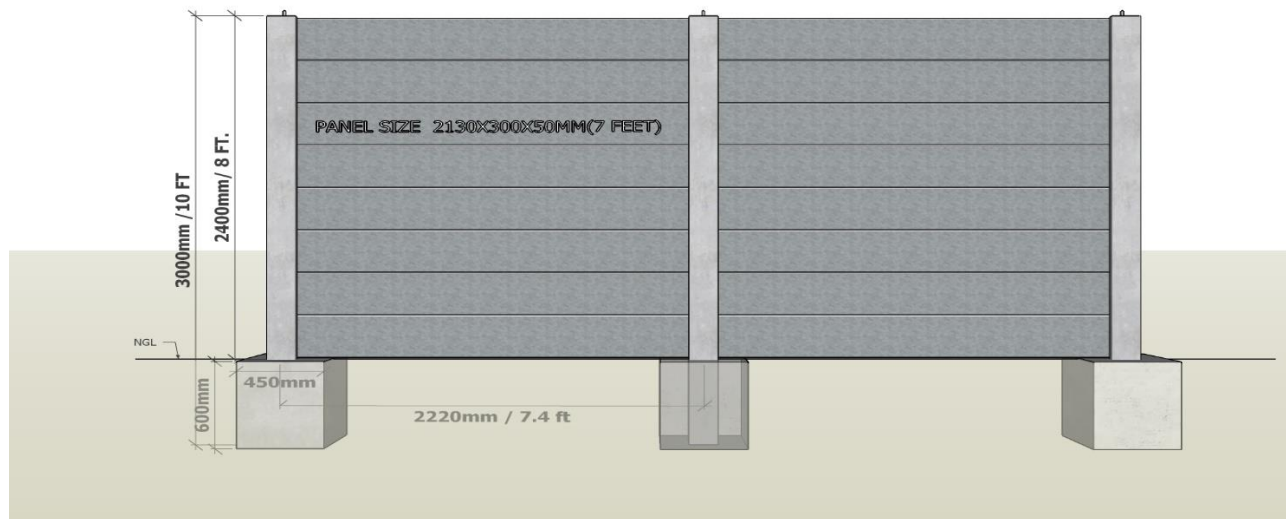
## Quality Assurance

1. Quality Assurance is done to achieve a desired grade of concrete M25/M30 etc. The compressive strength is tested by cube testing method by taking 6 cubes/day and Slump cone test (for water and cement ratio) during the process.
2. Slump cone test is done to check the workability of the concrete and the requirement of water to cement ratio is 0.45.
3. Cubes of 150x150x150 mm are taken to check the compressive strength of the concrete.
4. Finishing is checked after de-molding.
5. Proper Curing is done to gain strength.
6. Proper checking of raw material before use.



*Innovations Towards Boundary Wall*

## Technical Specification's



### Note:-

- All dimensions are in mm unless otherwise
  - The drawing shall not be scaled, follow the indicated dimensions.
  - Grade of concrete for our precast post and panel is M30
  - PC wire of 3mm is used as prestressing R/F.
  - Nos of strands in post-7Nos.
  - Nos of strands in panel -4 Nos.
  - Considerable Deviation for Post & Panel.
- Post : Thickness : 150mm+10mm  
Length : +25mm
- Panel: Length : 2130+25mm  
Width : 300+10mm  
Thickness : 50+5mm.

*Innovations Towards Boundary Wall*

## Fitting Equipment's

### **FOUNDATION HOLE PROCEDURE:**

- ✓ Normally whenever there is a requirement, we make foundation hole with the help of our special designed drilling machine for higher accuracy and fast execution.



### **CONCRETE MIXING AND POURING MACHINE:**



- ✓ We have technical team of people who has good amount of experience for installation of pre-cast compound wall.
- ✓ They take care of entire work of installation as per commitment

*Innovations Towards Boundary Wall*

## OUR VALUABLE CUSTOMER

### SOLAR PROJECTS

SR NO.	CLIENT NAME	QUANTITY (R.mtr.)	LOCATION
1.	RENEW POWER	1. 5500 2. 13000 3. 10000 4. 8000 5. 7500 6. 5000	1. Mehboobnagar,TS 2. Mulkanoor,TS 3. Dichpally,TS 4. Rachala,TS. 5. Ponakkal,TS. 6. Cumbum,AP.
2.	STERLING WILSON	1. 8500 2. 5000 3. 6000 4. 3000 5. 4000 6. 2250 7. 8000 8. 2000	1.KM pally,TS.(100MW Suraj Kiran Renewable) 2. Rajasthan. 3. Rajasthan. 4. Punjab. 5. MP. 6. Maharastra. 7.Hindupur,AP.(50MW First solar) 8.Solapur,Maharastra.
3.	Mahindra Susten	1. 1000 2. 3500	1. MP. 2. MP.
4.	Mahindra EPC	1. 10000	1. MP
5.	BOSCH	1. 1300	1.Punjab.
6.	Enrich Energy	1. 10000	1. Maharastra.
7.	SUZLON	1.4000 2. 2500	1.Wanaparhty,TS.(OSTRO 30MW) 2.Anantpur,AP.
8.	UTL	1.1000	1. Challekere.Karnataka.
9.	CleanMax	1.700	1.Tumkur,Kranataka.

*Innovations Towards Boundary Wall*



## INDUSTRIAL PROJECT

### VADODARA

- TRANSPEK INDUSTRY LIMITED, EKALBARA, VADODARA
- BENZO PETRO INTERNATIONAL LIMITED, LUNA, VADODARA
- EXEMED PHARMACEUTICALS, LUNA, VADODARA
- GULBRANDSEN CHEMICALS PVT. LIMITED. MANJUSAR, VADODARA
- TML INDUSTRIES LIMITED. KARAKHADI, VADODARA
- SUDEEP PHARMA LIMITED. NANDESARI, VADODARA
- KIRI DYES & CHEMICALS LIMITED, DUDHWALA, VADODARA
- RUDOLF KIRI CHEMICALS PVT. LIMITED, DUDHWADA, VADODARA
- ASHAHI SONGWON COLORS LIMITED, KARKHADI, VADODARA
- NIRMA LIMITED, ALINDRA, SAVALI, VADODARA
- UNIVERSAL MEDICAP LIMITED, DASHRATH, VADODARA
- ADITYA FORGE LIMITED. G.I.D.C. POR, VADODARA
- SHYAM INDUSTRIES LIMITED, POR, VADODARA
- QUEBEC PETROLEUM RESOURCE LIMITED, KARAKHADI, VADODARA
- RISHI LASER LIMITED MAKARPURA, VADODARA
- KEMROCK INDUSTRIES & EXPORTS LIMITED, ASOJ, VADODARA
- ZYDEX BOITACH PVT. LIMITED, MANJUSAR, SAVALI, VADODARA.
- SHROFF ENGINEERING LIMITED, MAKARPURA, VADODARA.
- RELIANCE INDUSTRIES LIMITED, VADODARA.
- BAJAJ HEALTHCARE LIMITED, HALOL, VADODARA.

### BHARUCH

- PANAMA PETROCEM LIMITED, DAHEJ, BHARUCH.
- TML INDUSTRIES LIMITED, AT. & PO. PILUDRA, JAMBUSAR.
- ISGEC, G.I.D.C. INDUSTRIAL, DAHEJ (VAGARA).
- TRANSMETAL LTD. PILUDRA, JAMBUSAR, BHARUCH.
- INDOFIL INDUSTRIES LIMITED, DAHEJ, BHARUCH.
- GHARDA CHEMICALS LIMITED, PANOLI.
- AMC CHEMICALS PRIVATE LIMITED, G.I.D.C. PANOLI.
- P. I. INDUSTRIES, G.I.D.C. PANOLI.
- PANOLI ENVIRO TECHNOLOGY LIMITED, G.I.D.C. PANOLI.
- HIKAL LIMITED, PANOLI.
- EDAC INDUSTRIAL SERVICE LIMITED, JOLWA, DAHEJ.

**KUTCH**

- ANCHOR DAEWOO INDUSTRIES LIMITED, BHUJ, KUTCH.
- SAW PIPES LIMITED. MUNDRA, KUTCH.
- SUMANGAL GLASS IND. LIMITED, BHACHAU, KUTCH.

**KHEDA**

- SOPAN O & M CO. PVT. LIMITED, KAZIPURA, KHEDA.
- NABROS PHARMA PVT. LIMITED, N.H.NO.8, KHEDA.
- JAYPRAKASH ASSOCIATES LIMITED, SANGHOL, KHEDA.

**SURAT**

- GIPCL, KIM, SURAT
- RELIANCE INDUSTRIES LIMITED, MORA, SURAT.
- TEJASVI CONSTRUCTION (RELIANCE CNC AT VADODARA)

**BHAVANAGAR**

- EXCEL CROP CARE LIMITED, BHAVANAGAR.

**NAVASARI**

- U.S.NMP FILTER TECHNO, NAVASARI.

**MADHYAPRADESH**

- CONFIDENCE PETROLEUM INDIA LIMITED. UJJAIN.
- DWEKAM WELD TECH LIMITED, INDORE.
- GUARANG METALS PRIVATE LIMITED, INDORE.
- PREM TEXTILE (INTERNATIONAL), INDORE.
- SONIC BIOCHEM EXTRACTION LIMITED, MANDSAUR.
- D & H SECHERON ELECTRODES PRIVATE LIMITED, INDORE.

**MAHARASTRA**

- MALPANI PARIWAR CHARITABLE TRUST, SANGAMNER.
- GIRIRAJ ENTERPRISE, SANGAMNER.
- FREIGHT WINGS INDIA PVT. LTD., MUMBAI.
- COLDSTAR LOGISTICS PVT. LTD., MUMBAI.
- M/S KAMAL PETROL DEPOT, SANGAMNER.

**UTTARPRADESH**

- SAT3TEL INFRACTURE PVT. LTD. - SITAPUR

*Innovations Towards Boundary Wall*

## OTHER CIVIL ACTIVITIES

We are "**TRIDEV GROUP**" are one of efficient and quality based EPC provider and turnkey contractor in solar project, as well as general civil or miscellaneous civil work.

### ***Our specialization in solar :-***

- a) All piling work EPC.
- b) Control room civil work.
- c) Inverter room civil work.
- d) Transformer foundation work.
- e) Cable Trench and drainage work.
- f) W.B.M internal and external roads plants.
- g) land cleaning and grading.
- h) Structure Module Fitting.

### **Solar projects:-**

#### **# Sterling & Wilson Ltd.**

- 1) 7000 NO'S Piling work at Hindupur A.P.(50MW FIRST SOLAR).
- 2) 3000 NO'S Piling work at KM pally, TS. (100MW SURAJ KIRAN RENEWABLE)..

Actual pics from site.



## OUR GROUP OF COMPANIES



Unit – I : *NH-7, Village mallepalli, Dist. Kurnool-518216, Andhra Pradesh.*

GSTIN: 37AAKFT4999H1ZC.

Unit – II : *N.H. 8, Vasad – 388 306. Ta./Dist. Anand, Gujarat-India.*

GSTIN: 24AAFFT7985A1Z2.



Unit – III : *9/2 bodhare, chalisgaon, Dist; jalgaon, Maharastra.*

GSTIN: 27ADFFS8680L1ZA (Maharastra)

GSTIN: 24ADFFS8680L1ZG (Gujarat)

GSTIN: 36ADFFS8680L1ZB (Telangana)



HO :- *A1 MANSI GREEN, NR. OVER BRIDGE, BORIAVI, 387310, ANAND, GUJARAT.*

GSTIN: 24ADFFS8682J1ZI (Gujarat)

*Innovations Towards Boundary Wall*